



INSTALLING DTEI 12d MODEL CUSTOMISATION FILES

1.0 Administration rights

Before setting up or editing the customised DTEI 12d Model files you will need to have administration rights to your computer.

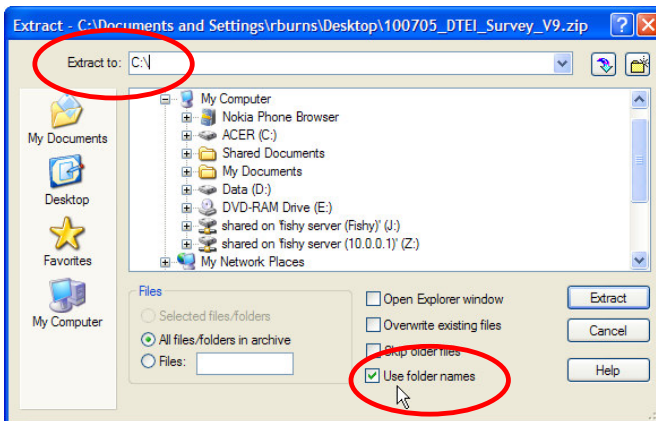
2.0 Save the DTEI_Survey/Design . zip file

The first step to setting up either a single user or for company wide access of these files is for one user to download and save the zipped file.

3.0 Extracting the files

The DTEI 12d Model Customised files have been setup to extract directly onto your local computer.

When you extract the files ensure you have set the directory path to the local C:\ drive and that the "Use folder names" box is ticked.



Extracting the files in this manner will allow users of this computer access to the files immediately using the newly created env_config.4d file.

The customised files have now been extracted into the following grouped directories;

C:\12d\9.00\DTEI_Customisation\SURVEY_12d9\DTEI_Survey_User
C:\12d\9.00\DTEI_Customisation\SURVEY_12d9\DTEI_Survey_User_Lib

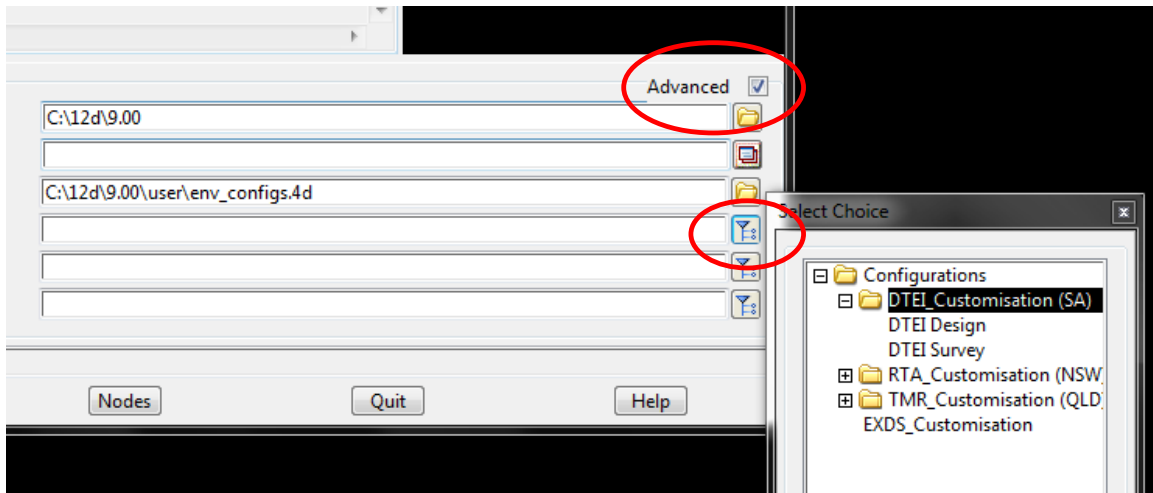
C:\12d\9.00\DTEI_Customisation\DESIGN_12d9\DTEI_Design_User
C:\12d\9.00\DTEI_Customisation\DESIGN_12d9\DTEI_Design_User_Lib

4.0 Save the env_config.4d file

Attached to the email provided was a text file for accessing the DTEI Customisation files. Please save the “env_config.4d” file to the following directory;

C:\12d\9.00\User

The config file and DTEI customisation libraries are now available via the 12d Project Selection panel and can be accessed by selecting the advanced tick box provided.



5.0 DTEI 12d Customisation Files on Company Network:

The following notes outline the required steps to move the DTEI – 12d customised files onto a company network server for access by 12d Users Company wide.

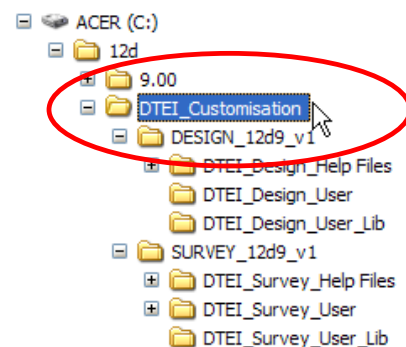
We start after the steps outlined above have been performed with the files now existing on a local machine and checked to have been running correctly on starting of 12d Version 9.

5.1 Select a location on the Network server

Select an appropriate location on the Network server accessible by all users.

Eg. **J:\engineering\standards\software\12d**

Copy or move the entire ‘DTEI_Customisation’ directory, including sub-directories into the desired location on the network.





5.2 Watch the Env_Config_Editing video

A video on editing the Env_Config.4d file has been created and a link provided within the email, which has been sent.

If you cannot find this link, simply cut and paste the location below into your internet browser.

http://www.exds.com.au/video/Env_Config_Editing/Env_Config_Editing.html

If unsuccessful, or if you have any questions regarding the DTEI Customisation files, please call the 12d Technical Support line on (02) 9453 9449.

Thank you.